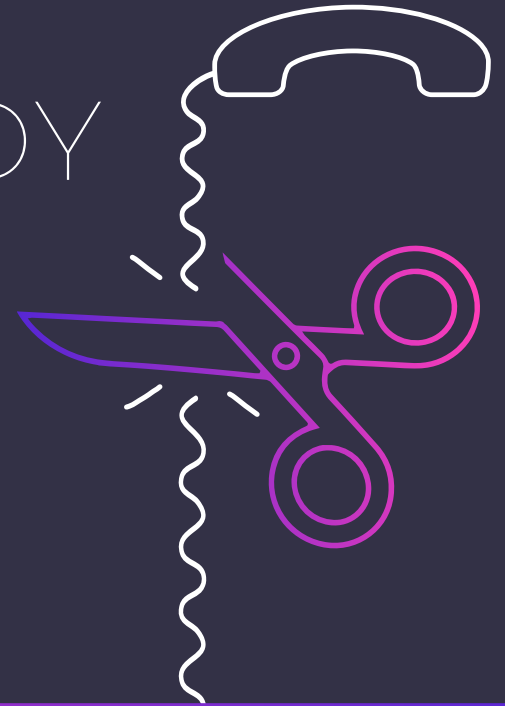


# GET YOUR BUSINESS READY FOR THE PSTN SWITCH-OFF

## All-in-one PSTN Switch-off Bundle



## Keep your business connected beyond 2025

Gradwell's PSTN Replacement bundle is a purpose-built solution for the SME market that includes voice, hardware, and connectivity. The package offers a streamlined upgrade from PSTN to VoIP, guiding you through the 2025 switch-off with minimal disruption.

Our PSTN replacement solution eliminates disruptions and unlocks enhanced communication features for your business at a low cost.



Packages start from  
**£9.50 per month**

### Your new phone system – Wave

- ✓ **Take work anywhere**  
Access Wave wherever you are through your web browser, handsets and mobile app.
- ✓ **Simple to manage**  
Manage your users and settings through an easy to navigate control panel.
- ✓ **Unrivalled flexibility**  
Only pay for what you need, allocate users and minutes for whatever your business needs.

## PSTN Replacement Bundle Includes



### Broadband Connection

Single Order Generic Ethernet Access (SoGEA) and Fibre to the Premises (FTTP) ensures a stable and efficient data connection, laying the foundation for a reliable network once PSTN-based services are phased out. You can also add backup mobile data SIMs to your package.



### Feature-rich Phone System

Described by PC Pro Magazine as “the smoothest possible path to VoIP,” Wave offers a hassle-free, yet feature-rich solution designed for SMEs.



### Phones or Adaptors

The package comes with flexible handset options to remove significant upfront costs. You can continue using what you already have via an ATA Adaptor if compatible, or a replacement handset can be included with the cost amortised over the contract term.

## Why Choose Gradwell?

Gradwell have been supporting SME businesses since our inception 25 years ago when we launched the UK's first VoIP services. Our customers are all on all-IP services already, so we have a huge amount of experience serving customers like you and we are ready to help more SME's make the move to IP.



Don't worry if you've got entry systems, ringers or other devices on PSTN services as we can help you migrate these across too.

Ready to prepare your business for PSTN Switch-Off?

[GET A QUOTE](#)